

EXPLORING & DEVELOPING MONGOLIA'S LITHIUM SALARS

BAAVHAI UUL LITHIUM BRINE PROJECT

With one of the Largest Exploration Licenses in Mongolia, ION Energy is poised to become a significant player in Asia's booming lithium market.



WORLD CLASS HIGH-GRADE LITHIUM BRINE PROJECT



MAX GRADE 811 PPM LI



GROWTH IN GLOBAL EV MARKET



FIRST-CLASS MANAGEMENT TEAM



100% OWNERSHIP



80,000 HA LAND OWNERSHIP OVER MAIN DEPOSIT MINERAL RIGHTS

STRATEGIC ADVANTAGE

Low cost operating environment and first mover advantage

Gobi desert is an arid environment with high evaporation rates with a year-round working environment

30 km by road to China border crossing and close to infrastructure

5 planned Giga factories in close proximity

Korea, Taiwan and Japan all nearby with large tech industries utilizing and manufacturing lithium batteries

Significantly under valued based on EV/Hectares among its peers

BAAVHAI UUL PROJECT

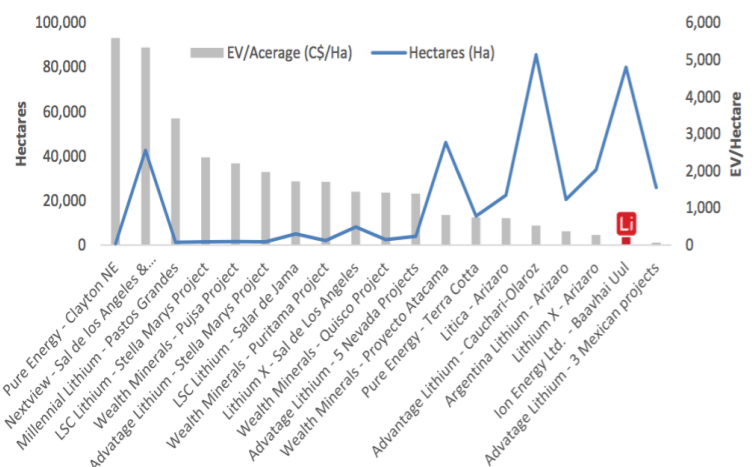
LARGE LAND PACKAGE – 80,000+ hectares, highly prospective for lithium brine

GRADE – Average grade 426ppm with max grade 811ppm lithium

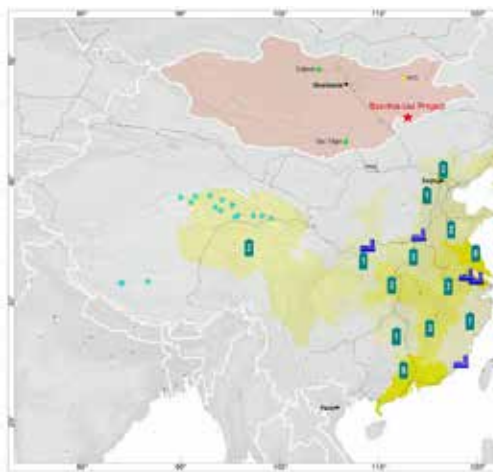
FAVOURABLE GEOCHEMISTRY – Low potassium and magnesium ratios

FAVOURABLE FOR PRODUCTION – High evaporation and low precipitation endorheic basin, no outflow to external bodies of water

ION Energy vs. Peers



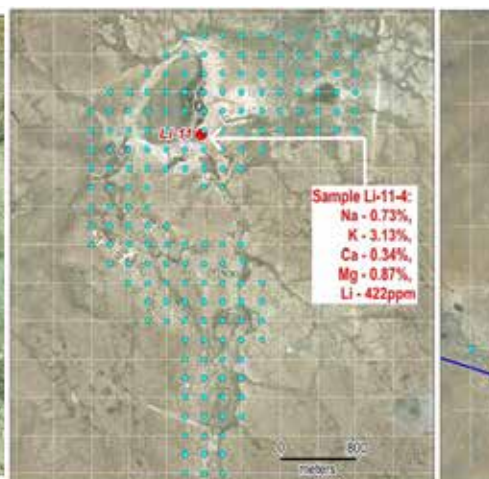
BAAVHAI UUL LITHIUM BRINE PROJECT



PROXIMITY MAP



ONE OF THE SALARS ON BAAVHAI UUL



EXPLORATION PLAN

ION Energy Investment Summary

- Commodity with high global demand
- Superior geographic location in Mongolia and promising early results
- Fully-funded to continue aggressive growth strategy
- Strong in-country team and proven track record Low cost production profile
- Well-positioned to create shareholder value

PHASE 1A EXPLORATION WORKS

Surface geochemical sampling of sediments/ brine in 200x200m grid using auger drilling geological mapping at scale of 1:25,000 geophysical survey to define the basin shape, geological formations and structural features

PHASE 1B EXPLORATION WORKS

Geochemical sampling in 400x400m grid to verify the presence of lithium



CAPITAL STRUCTURE

Basic Common Shares(*)	45,903,027
Options	1,451,539
Warrants(*)	6,666,667
Mkt. Cap.(*)	~C\$14M
Cash (*)	~C\$3M

*Assuming Equity Financing of C\$3M at C\$0.30 Per Unit in Q2 2020.



OWNERSHIP

Management	39%
Other	61%
Total	100%

*Assuming Equity Financing of C\$3M at C\$0.30 Per Unit in Q2 2020.



MANAGEMENT & DIRECTORS

ALI HAJI PRESIDENT & CEO & DIRECTOR	JOHN MCVICAR CFO
MATTHEW WOOD CHAIRMAN	ENKHTUVSHIN KHISHIGSUREN DIRECTOR
ANEEL WARAICH DIRECTOR	BATAA TUMUR-OCHIR DIRECTOR